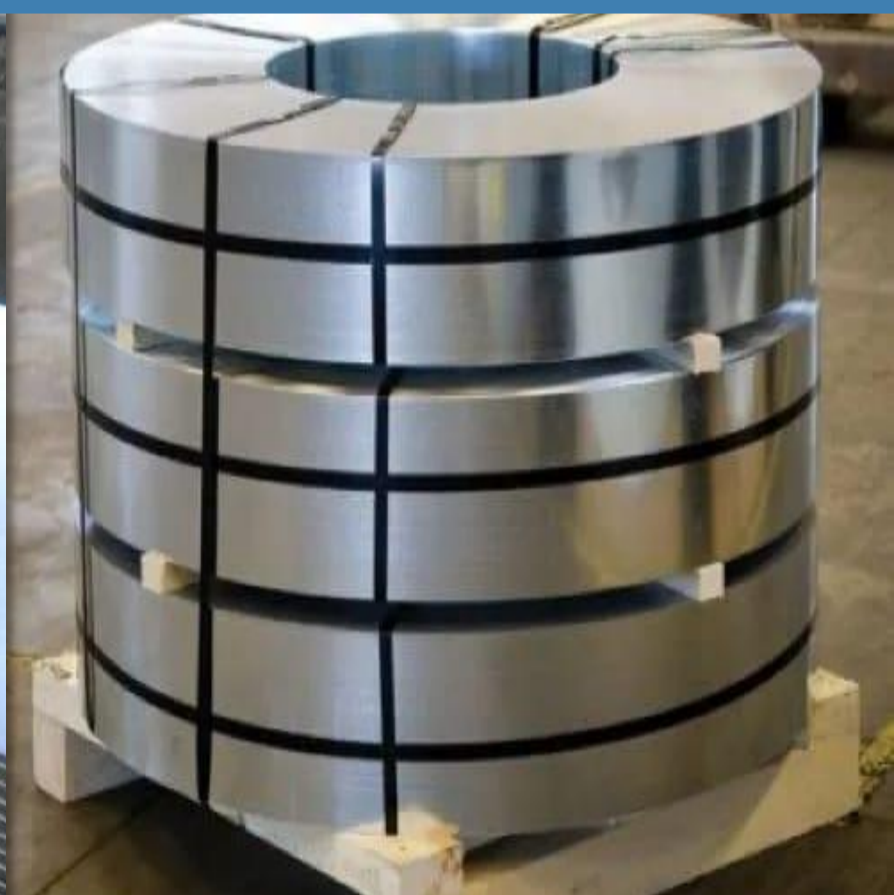
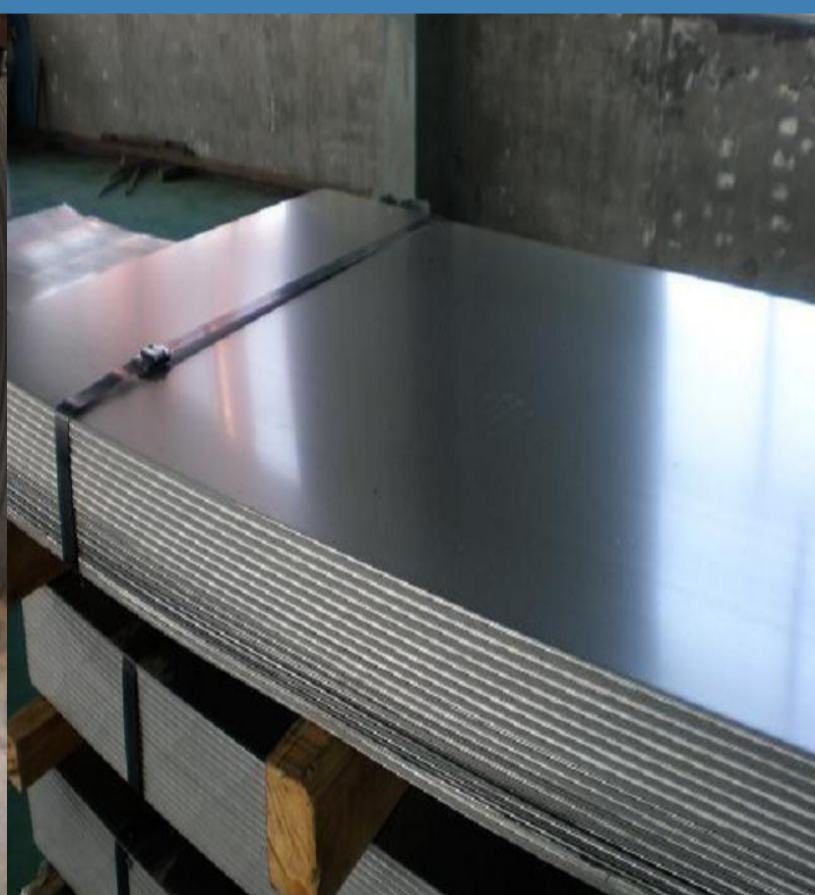




AB STEEL CORPORATION



**AM/NS
INDIA**



VISION:

Our vision is to be the most reliable and innovative providing quality steel products and services

MISSION:

To drive economic growth by delivering quality steel products and exceeding customer expectations with a proactive, customer-focused approach, adapting to their evolving needs."

ABOUT US

AB Steel Corporation, based in Thane, India, is a trusted stockist of JSW Steel Ltd. and POSCO, specializing in high-quality steel products since 1980. With a strong focus on integrity, trust, and innovation, we have evolved from a small trading firm to a leading supplier catering to diverse customer needs. Handling over 60,000 MT of steel annually and supported by a ready stock of 5,000 MT, we ensure timely and efficient service. Backed by 50 dedicated employees and state-of-the-art facilities, we remain committed to excellence, customer satisfaction, and contributing to India's growth.

Our Products :

- CRCA : IS513 : DQ, DDQ, EDDQ,IF
- CRFH : IS513 : Galvanizing Grade
- GP SkinPass
- Galvannealed
- HRPO/HRSP0 : IS513 : DQ, DDQ,
- PPGI { Sheet Coil & Profile},
- G.P. Coil & Sheets

CRCA Steel Coils and Sheets

CRCA (Cold-Rolled Closed Annealed) steel is low-carbon steel renowned for its formability, workability, precise thickness tolerances, superior flatness, and clean surface, tailored to meet specific customer requirements.

❖ Applications of CRCA products

Automobiles
Telecommunications
Home Appliances
Engineering and Fabrication
Electrical
Aerospace
Furniture
Information Technology
Drums and Barrels



❖ Specifications & Grades

Grades

IS 513 CR1 - CR5 ; JIS G 3141 SPCC, SPCD, SPCE, SPCEN
SAE 1006, 1008, 1010, EN 10130, BS 1449
JIS G 3135 SPFC

Thickness (T):

0.35 - 3.20 mm (Tolerance : 0.03 for T<=1.00mm, 0.06 for T> 1.00mm)

Width (W):

Cut Sheets: 50 - 1600 mm
Coils: 20 - 1600 mm
Tolerance: 0.20mm for Slit Edge, +8mm for Mill Edge

Coil Inner Dia: 508 mm

Coil Weight (Max): 16 MT for Slit Edge; 30 MT for Mill Edge

Length (L): 200 - 4000mm,Tolerance: +1.00mm for L upto 1000mm, + 2.00mm for L >1000mm.

Surface Finish: Bright or Matt (Matt Ra between0.50 - 1.50 microns)

❖ Characteristics

Good Surface Finish
Flatness
Weldability
High Strength to Weight Ratio
Close Dimensional Tolerances



Hot Dip Galvanized Steel coils & sheets

Coated with pure zinc or zinc alloy, Hot Dip Galvanized Steel offers superior corrosion resistance. Its spangled surface and excellent finish make it ideal for use in atmospheric environments and natural finish applications across various segments.

Applications

- Automobiles
- Telecommunications
- Home Appliances
- Engineering and Fabrication
- Aerospace
- Furniture
- Information Technology



❖ Specifications & Grades

Grades

IS 277 GPO, GPD, GPED & GPIF (JIS G 3302 Z(100-350)
M 220, 250, 280, 320, 350, 380)
EN10142, DIN17162, ASTM A653/M

Thickness (T):

0.35 - 3.20 mm (Tolerance : 0.03 for T≤1.00mm, 0.06
for T> 1.00mm)

Width (W):

Cut Sheets: 50-1600 mm

Coils: 20-1600 mm

Tolerance: 0.20 mm for Slit Edge, 0.6 mm for Mill Edge

Coil Inner Dia: 508 mm

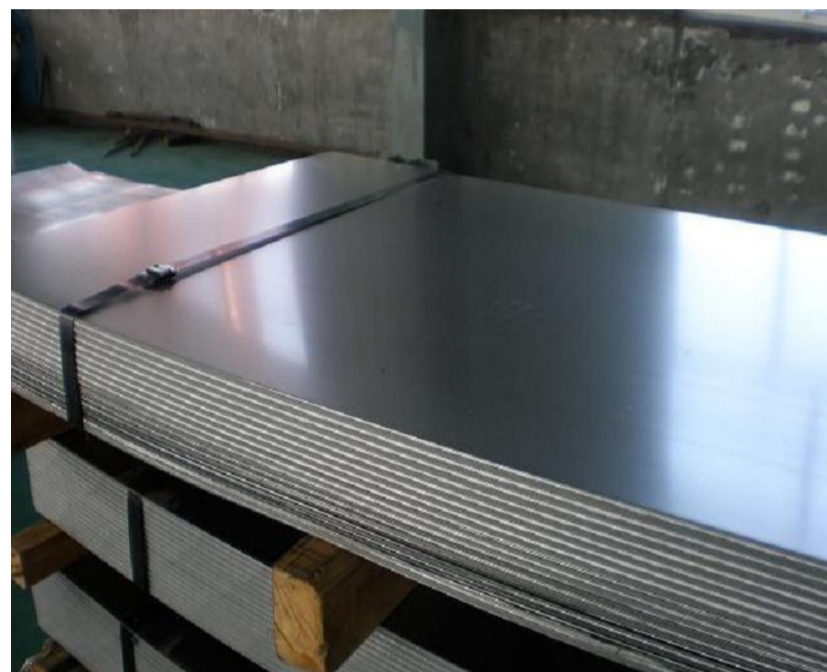
Coil Weight (Max): 16 MT for Slit Edge; 30 MT for Mill
Edge

Length (L):200 - 4000mm,Tolerance: +1.00mm for L
upto 1000mm, + 2.00mm for L >1000mm.

Surface Finish: Bright or Matt (Matt Ra between 0.50 -
1.50 microns)

❖ Characteristics

- Excellent Corrosion Resistance
- Good Surface Finish
- Flatness
- Formability
- Close Dimensional Tolerances



AB STEEL CORPORATION

Deals In : All Kind Of GP,
CR ,HR, PPGI, Coil and Sheet

Address

Office: Plot No. B 39 Near Birla Mandir, Taloja MIDC,
Maharashtra 411208

Service Centre: Survey No. 45/4, Mohammadiya Estate Pimpri, Dahisar Mori,
Thane 400612.

Website:

www.absteelcorporation.in

Gmail

absteelcorporation1@gmail.com

Mobile No:

9820708787